

镀锌&彩涂钢板

Galvanizing&Color coating



青岛河晏钢结构有限公司

Tel: +86 19539395613

Mobile: +86 15853922960

Email: eva@heyansteelstructure.com

QINGDAO HEYAN STEEL STRUCTURE CO.,LTD

Tel: +86 19539395613

Mobile: +86 15853922960

Email: eva@heyansteelstructure.com

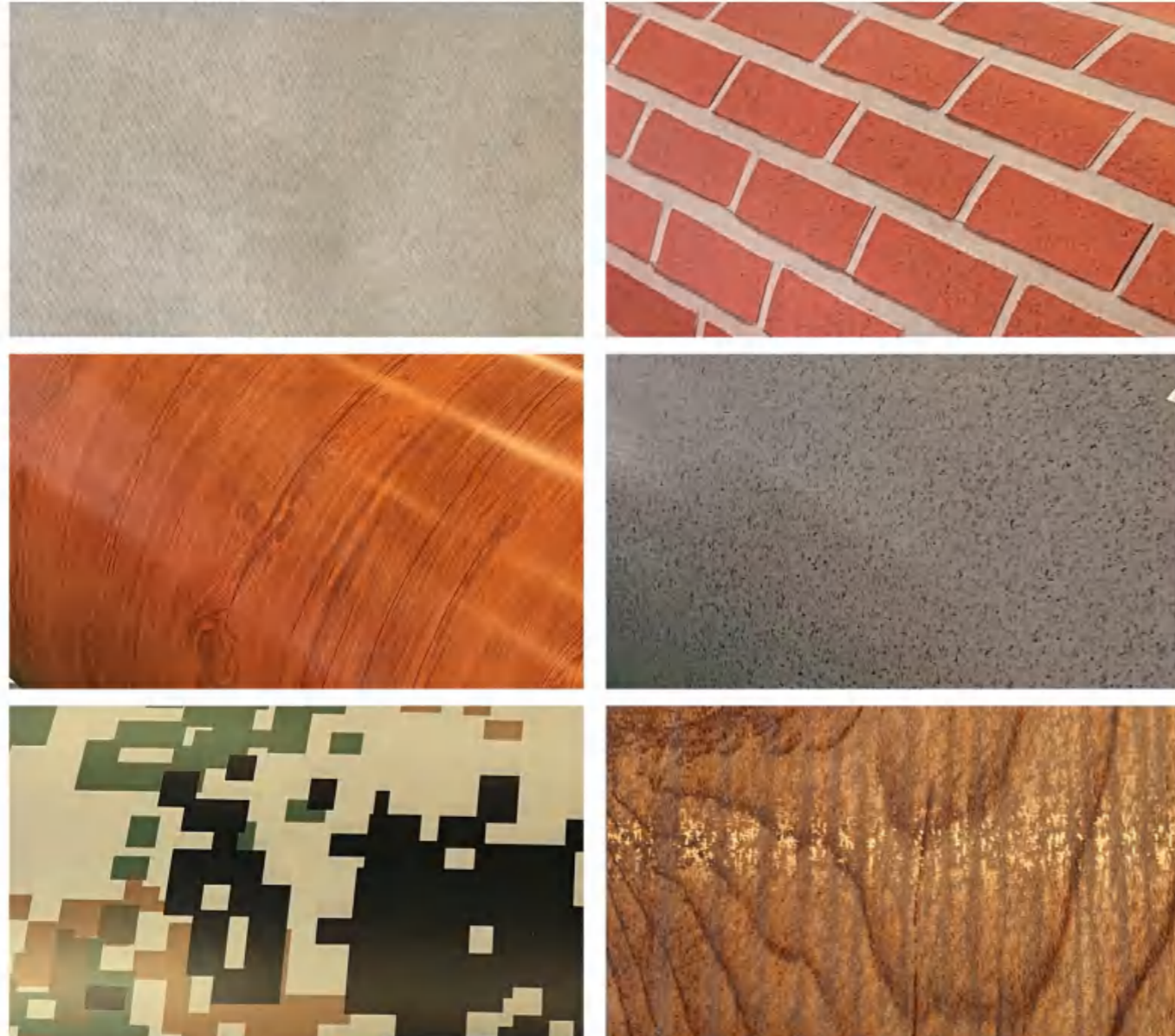
产品介绍

Product Introduction

涂层 | Coating

按涂层体系可生产聚酯、硅改性聚酯、高耐久聚酯、高封闭性聚酯、聚偏二氟乙烯（氟碳）、环氧、热覆膜等，按表面状态可分为正常涂层、网纹板、绒面板、印花板和压花板等，广泛应用于军工、家电、装饰、建筑、商用汽车、集装箱房屋等行业。

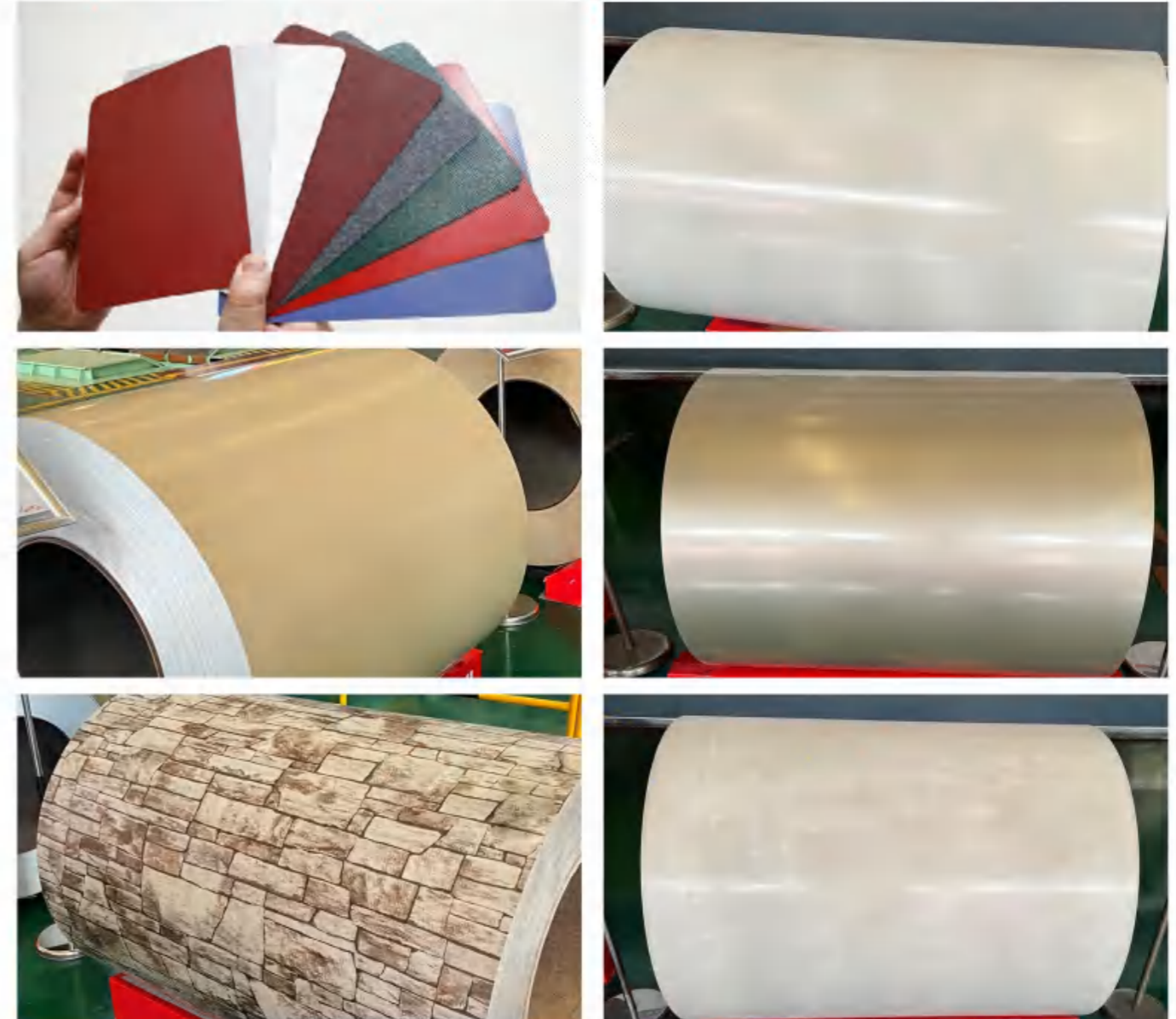
According to the coating system can produce polyester, silicon modified polyester, high durability polyester, high sealing polyester, polyvinylidene fluoride (fluorocarbon), epoxy, hot coating, according to the surface state can be divided into normal coating, mesh board, suede board, printing board and embodying board, etc., widely used in military, household appliances, decoration, construction, commercial vehicles, cluster housing and other industries.



基板 | Substrate

基板可选择镀锌、镀铝锌、中铝锌铝镁、高铝锌铝镁、铝镁锰、不锈钢、钛锌合金等，按用途可分为军工用、家电用、建筑用和装饰用等，按功能可分为伪装、自清洁、热反射、防静电、抗菌、高耐蚀等。

Base plate can choose galvanized, aluminum zinc plating, aluminum zinc aluminum magnesium, high aluminum zinc aluminum magnesium, aluminum magnesium manganese, stainless steel, titanium zinc alloy, according to the use can be divided into military, household appliances, construction and decoration, according to the function can be divided into camouflage, self-cleaning, heat reflection, anti-static, antibacterial, high corrosion resistance, etc.



酸洗板 Pickling Plate



酸洗板是以优质热轧薄板为原料，经酸洗机组去除氧化层，切边，精整后，表面质量和使用要求介于热轧板和冷轧板之间的中间产品，是部分热轧板和冷轧板理想的替代产品。

酸洗板市场需求主要集中在搪瓷、汽车、摩托车、压缩机、风机、机械制造、零配加工、五金配件、货架等。随着技术的进步，酸洗板目前已涉及家电、集装箱、电气控制柜等行业，其中使用酸洗板代替冷轧板在一些行业发展迅速。

Pickling plate is a high quality hot rolled sheet as raw material, after the pickling unit to remove the oxide layer, cutting edge, finishing, surface quality and use requirements between hot rolled plate and cold rolled plate intermediate product, is part of hot rolled plate and cold rolled plate ideal replacement products.

Pickling board market demand is mainly concentrated in enamel, automobile, motorcycle, compressor, fan, machinery manufacturing, spare parts processing, hardware accessories, shelves, etc. With the progress of technology, pickling plate has been involved in household appliances, containers, electrical control cabinets and other industries, among which the use of pickling plate instead of cold rolled plate in some industries has developed rapidly.



产品名称 Production name	牌号 Metal Grades	屈服强度/Mpa Yield strength(Mpa)	抗拉强度/Mpa Tensile strength(Mpa)	断后伸长率/% Elongation after fracture(%)
搪瓷用钢 Steel for enamel	TCR2	≥300	≥210	≥28
汽车用钢 Automobile steel	SAPH310	≥310	≥185	≥33
	SAPH370	≥370	≥225	≥32
	SAPH400	≥400	≥255	≥31
	SAPH440	≥440	≥305	≥29
低碳钢 Mild steel	DC01	≤280	270-410	≥28
	DC03	≤240	270-370	≥34
无间隙原子钢 Interstitial atomic steel	DC04	≤210	270-350	≥38

冷轧板 Cold-Rolled Plate



冷轧板，是以热轧卷为原料，在室温下在再结晶温度以下进行轧制而成的产品。

冷轧板具有优良的板形、表面质量，表面清洁光亮、品种多，广泛应用于汽车、家电、包装容器、搪瓷、建筑等行业。

Cold rolled plate is a product made of hot rolled coil rolled at room temperature and below re-crystallization temperature.

Cold rolled plate has excellent shape, surface quality, clean and bright surface, many varieties, widely used in automobile, household appliances, packaging containers, enamel, construction and other industries.



产品名称 Production name	牌号 Metal Grades	屈服强度/Mpa Yield strength(Mpa)	抗拉强度/Mpa Tensile strength(Mpa)	断后伸长率/% Elongation after fracture(%)
马氏体高强度钢 Martensitic high strength steel	CR780/980MS	≥780	≥980	≥10
湿搪瓷 Wet enamel	DC01-TC	≤260	270-370	≥35
	GT340-TC	≥340	≥400	≥22
干搪瓷 Dry enamel	GTC1	≤220	270-350	≥38
低碳钢 Mild steel	DC01	≤270	≤370	≥35
	DC03	≥190	≥270	≥41
无间隙原子钢 Interstitial atomic steel	DC04	≤165	≥270	≥43
	DC06	≤150	≥270	≥44

镀锌板 Galvanized Plate



镀锌板是指表面镀有一层锌的钢板。镀锌是一种经常采用的经济而有效的防锈方法，世界上锌产量的一半左右均用于此种工艺。

热镀锌及锌铁合金性能优越，具有良好的耐蚀、成型、涂装等综合性能，主要应用于建筑、家电、汽车、冶金行业。其中建筑行业主要用于屋顶、门窗、卷帘门、吊顶龙骨等；家电用于冰箱、洗衣机等；汽车行业主要用于车身外壳、底盘、门、油箱、挡泥板等；冶金行业主要用于钢窗坯料、彩涂板基板等。

Galvanized plate is a steel plate coated with zinc. Galvanizing is an economical and effective method of rust prevention, and about half of the world's zinc production is used in this process.

Hot-dip galvanizing and zinc-iron alloy have excellent performance, with good corrosion resistance, forming, coating and other comprehensive properties, mainly used in construction, home appliances, automobiles, metallurgy industries. The construction industry is mainly used for roof, doors and Windows, rolling shutter doors, ceiling keel, etc. Home appliances for refrigerators, washing machines, etc.; Automotive industry is mainly used for body shell, chassis, door, fuel tank, fender, etc. Metallurgical industry is mainly used for steel window blank, color coated plate substrate, etc.



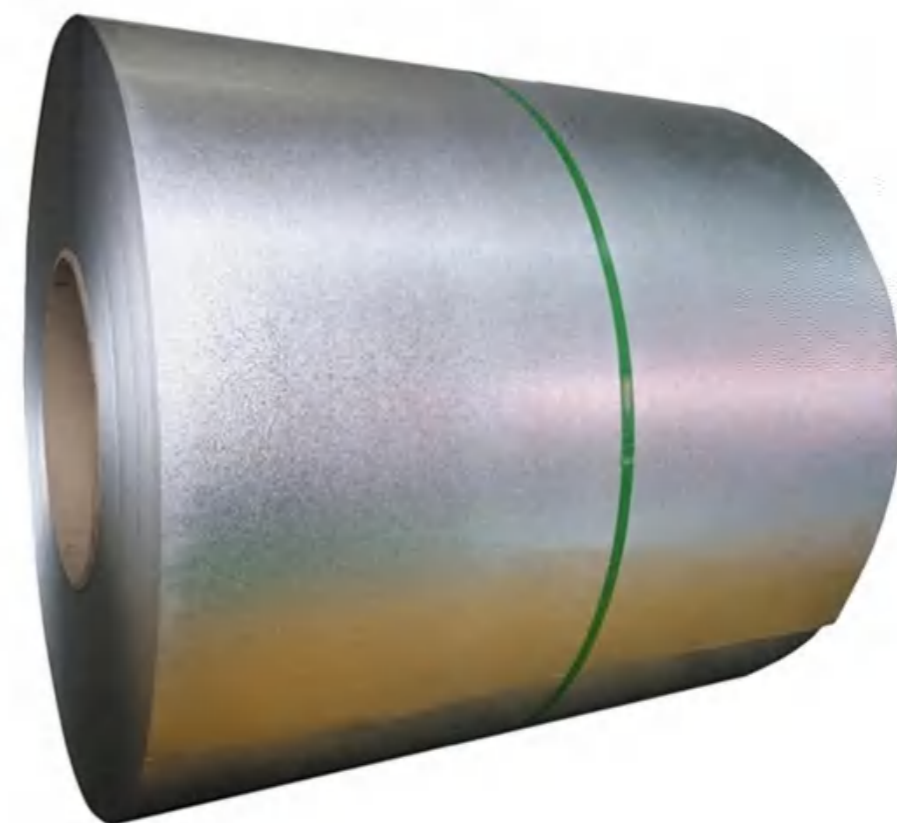
产品名称 Production name	牌号 Metal Grades	屈服强度/Mpa Yield strength(Mpa)	抗拉强度/Mpa Tensile strength(Mpa)	断后伸长率/% Elongation after fracture(%)
低碳钢 Mild steel	DX51D+Z	≤360	≤440	≥20
	DX52D+Z	≤260	300-390	≥28
无间隙原子钢 Interstitial atomic steel	DX53D+Z	≤200	270-320	≥38
	DX54D+7	≤180	270-310	≥40
结构钢 Structural steel	S250GD+Z	≥250	≥330	≥19
	S350GD+Z	≥350	≥420	≥16
	S450GD+Z	≥450	≥510	≥14
	S550GD+Z	≥550	≥560	/

镀铝锌板 Aluminized Zinc Plate



镀铝锌板合金镀层由约55%的铝、约43.5%的锌、约1.5%的硅组成，相对于传统镀锌产品，具有更加优良的抗腐蚀性、耐热性、热反射性等特点。镀铝锌板表面锌花细小均匀，色彩亮丽，表面硬度高，可以涂敷多种颜色的耐指纹半透膜，广泛应用于家电、建筑、结构、电器等行业。

Aluminized zinc plate. The alloy coating is composed of about 55% aluminum, about 43.5% zinc and about 1.5% silicon. Compared with traditional galvanized products, it has better corrosion resistance, heat resistance and heat reflection. Aluminized zinc plate surface zinc flower fine uniform, bright color, high surface hardness, can be coated with a variety of colors fingerprint resistant semi-permeable film, widely used in household appliances, construction, structure, electrical appliances and other industries.



产品名称 Production name	牌号 Metal Grades	屈服强度/Mpa Yield strength(Mpa)	抗拉强度/Mpa Tensile strength(Mpa)	断后伸长率/% Elongation after fracture(%)
低碳钢 Mild steel	DX51D+AZ	≤360	≤440	≥20
	DX52D+AZ	≤260	300-360	≥28
无间隙原子钢 Interstitial atomic steel	DX53D+AZ	≤200	270-320	≥38
	DX54D+AZ	≤180	270-310	≥40
结构钢 Structural steel	S250GD+AZ	≥250	≥330	≥19
	S350GD+AZ	≥350	≥420	≥16
	S450GD+AZ	≥450	≥510	≥14
	S550GD+AZ	≥550	≥560	/
龙骨专用料 Special material for keel	LG550GD+AZ	≥550	≥560	≥5

铝锌镁及锌铝镁板 Aluminum Zinc Magnesium & Zinc Aluminum Magnesium Plate



铝锌镁及锌铝镁板镀液成分在锌、铝的基础上添加了2%的镁，对比其他镀层产品有优异的切口保护性能。铝锌镁及锌铝镁板表面锌花细腻、美观，有良好的耐腐蚀性能，产品广泛用于家电、建筑、结构等行业。

Aluminum zinc magnesium and zinc aluminum magnesium plating bath composition on the basis of zinc and aluminum added 2% magnesium, compared with other coating products have excellent notch protection performance. Aluminum zinc magnesium and zinc aluminum magnesium plate surface zinc flowers delicate, beautiful, has good corrosion resistance, products are widely used in household appliances, construction, structure and other industries.



产品名称 Production name	牌号 Metal Grades	屈服强度/Mpa Yield strength(Mpa)	抗拉强度/Mpa Tensile strength(Mpa)	断后伸长率/% Elongation after fracture(%)
低碳钢 Mild steel	DX51D+AZM/ZM	≤360	≤440	≥20
	DX52D+AZM/ZM	≤260	300-360	≥28
无间隙原子钢 Interstitial atomic steel	DX53D+AZM/ZM	≤200	270-320	≥38
	DX54D+AZM/ZM	≤180	270-310	≥40
结构钢 Structural steel	S250GD+AZM/ZM	≥250	≥330	≥19
	S350GD+AZM/ZM	≥350	≥420	≥16
	S450GD+AZM/ZM	≥450	≥510	≥14
	S550GD+AZM/ZM	≥550	≥560	/

彩涂板

Color Coated Plate



彩涂板是以镀锌板、镀铝锌板、锌铝镁、铝锌镁、铝镁锰、不锈钢为基板，经过表面预处理，用辊涂的方法，涂上多层液态涂料，经过烘烤冷却而成。使用聚酯、硅改性聚酯、高耐候性聚酯、聚偏二氟乙烯、环氧以及高封闭耐腐蚀性等多种体系的涂料，具有卓越的耐久性、抗腐蚀性和成型性。产品广泛应用于家电、装饰、建筑、汽车等行业。

Color coated plate is galvanized plate, aluminum plated zinc plate, zinc aluminum magnesium, aluminum zinc magnesium, aluminum magnesium manganese, stainless steel as the base plate, after surface pretreatment, with roll coating method, coated with multiple layers of liquid paint, after baking and cooling. The use of polyester, silicon modified polyester, high weather resistance polyester, polyvinylidene fluoride, epoxy and high sealing corrosion resistance and other systems of coatings, with excellent durability, corrosion resistance and formability. Products are widely used in household appliances, decoration, construction, automobile and other industries.



产品名称 Production name	膜厚 Film thickness (μm)	核心性能 Core performance	T弯 T bend	MEK MEK (freq)	中性盐雾 Salt spray (h)	QUV-A QUA-A (h)	推荐使用环境 Recommended environment
自清洁产品 Self-cleaning products	≥ 25	碳黑实验 $\Delta E < 2$, 水接触角 $\geq 30^\circ$ Carbon black experiment $\Delta E < 2$ Water contact Angle $\geq 30^\circ$	2T	≥ 100	1000	3000	C3
热反射产品 Thermal reflection product	≥ 25	TSR ≥ 0.25 , SRI: 浅色系 ≥ 78 , 其他颜色 ≥ 29 TSR ≥ 0.25 , SRI: light color ≥ 78 other colors ≥ 29	2T	≥ 100	1000	1500	C3
防静电产品 Antistatic product	≥ 25	表面电阻值 106-109 欧姆 Surface resistance value 106-109 Ω	2T	≥ 100	1000	1500	C2
抗菌产品 Antibacterial products	≥ 25	抗金黄色葡萄球菌, 和大肠杆菌活性 > 2 Anti-staphylococcus aureus & Escherichia coli activity > 2	2T	≥ 100	1000	1500	C2

彩涂产品主要指标 Color products main indicators

涂层种类 Type of coating	推荐基板类型 Recommended substrate type	涂层厚度 Coating thickness (μm)	MEK MEK (freq)	T弯 T-bend (T)	孔隙率 Porosity	5%盐酸 5% HCl (h)	5%氢氧化钠 5% NaOH (h)	中性盐雾 Neutral salt spray (h)	酸性盐雾 Acid salt spray (h)	碱性盐雾 Alkaline salt spray (h)	QUV-A QUV-A (h)	普通环境 Ordinary environment (y)	专用环境 Dedicated environment (y)	推荐使用环境 Recommended environment
聚酯 (PE)	Z/AZ/ZM/AZM	≥ 20	≥ 100	3	/	24	24	1000	/	/	1000	10	/	C2
高耐候 (HDP)	Z/AZ/ZM/AZM	≥ 23	≥ 100	3	/	24	24	1500	/	/	1500	15	/	C3
硅改 (SMP)	Z/AZ/ZM/AZM	≥ 23	≥ 100	3	/	24	24	1500	/	/	1500	15	/	C2
氟碳 (PVDF)	Z/AZ/ZM/AZM	≥ 25	≥ 100	2	/	24	24	2000	/	/	3000	20~30	/	C4
聚氨酯 (PU)	Z/AZ/ZM/AZM	≥ 40	≥ 100	2	/	24	24	720	/	/	1000	10~20	/	C2
热覆膜 Thermal laminating	Z/AZ/ZM/AZM	≥ 100	/	0	/	360	/	/	/	/	/	10	/	C2
彩色印花 Color printing	Z/AZ/ZM/AZM	≥ 25	≥ 100	3	/	24	24	600	/	/	1000	10	/	C2
网纹、绒面 Mesh, suede	Z/AZ/ZM/AZM	≥ 25	≥ 100	2	/	24	24	1000	/	/	1000	10	/	C2
高耐蚀聚酯 (PE-Pro)	Z/ZM/AZM	≥ 25	≥ 1000	3	90V无击穿 No breakdown at 90V	120	120	2000	1500	1500	2000	15	10	C5
高耐蚀高耐候聚酯 (HDP-Pro)	Z/ZM/AZM	≥ 25	≥ 1000	3	90V无击穿 No breakdown at 90V	120	120	2500	2000	2000	3000	20	15	C5
超耐蚀超耐候聚酯 (HDP-Plus)	Z/ZM/AZM	≥ 30	≥ 1000	3	90V无击穿 No breakdown at 90V	360	360	4000	3000	3000	4000	25	20	C5
高耐蚀氟碳铝镁锰 (PVDF-Pro)	铝镁锰	≥ 25	≥ 1000	2	90V无击穿 No breakdown at 90V	240	240	10000	5000	5000	10000	50	/	重点工业工程、国家级公共项目 Key industrial projects, National public project
超耐蚀纳米氟碳铝镁锰 (PVDF-Plus)	铝镁锰	≥ 30	≥ 1000	2	90V无击穿 No breakdown at 90V	480	480	20000	10000	10000	15000	70	/	重点工业工程、国家级公共项目 Key industrial projects, National public project
百年不锈钢氟碳 (PVDF-Plus)	不锈钢	≥ 30	≥ 1000	2	90V无击穿 No breakdown at 90V	480	480	30000	10000	10000	15000	100	/	重点工业工程、国家级公共项目 Key industrial projects, National public project
高耐蚀环氧背漆 High corrosion resistance epoxy back paint	/	≥ 12	≥ 100	4	67.5V无击穿 No breakdown at 67.5V	120	120	2000	1500	1500	/	/	/	配套使用 Matching use
超耐蚀环氧背漆 Super corrosion resistant epoxy back paint	/	≥ 20	≥ 100	3	90V无击穿 No breakdown at 90V	240	240	3000	2500	2500	2000	/	/	配套使用 Matching use



冷轧生产线

Cold Rolling Production Line

拥有两条五机架连轧机组，两台六辊可逆轧机，设计产能200万吨，生产规格范围0.15~2.0*750~1500mm；生产线配备全自动激光焊机、板形仪、激光测速仪、测厚仪；具备厚度自动控制、板形自动控制系统、二级自动化控制系统，可生产高强、深冲产品，产品具有精确的尺寸、良好的板形及板面质量。

own two five-stand continuous roller sets, Two six-roller single-stand reversible mills, Design capacity of 2 million tons, production specifications range from 0.15~2.0*750 ~ 1500 mm; The production line is equipped with a full automatic laser welder, a shape meter, a laser velocimeter, and a thickness measuring instrument. With thickness automatic control system, plate automatic control system, secondary automatic control system, can produce high strength, deep-draw products, products with accurate size, good plate shape and plate quality.



连续退火生产线

Cold Rolled Continuous Annealing Production Line

连续退火机组设计产能40万吨，生产规格范围0.5~2.0*750~1400mm；产线配备全自动窄搭接电阻焊机、脱脂+电解清洗、立式退火炉、平整机、拉伸弯曲矫直机、板面自动检测仪（CCT）、针孔检测仪、圆盘剪、静电涂油机；可生产1000MPa级别高强钢、深冲产品、超深冲产品。

The continuous annealing set has an annual processing capacity of 40000 tons. The product specifications are 0.5-2.0mm in thickness and 700~1400mm in width. The production line is equipped with automatic narrow overlap resistance welding machine, degreasing + electrolytic cleaning, vertical annealing furnace, finishing machine, tensile bending straightener, plate surface automatic tester (CCT), pinhole detector, disc shear, electrostatic oiler. The product varieties include high-strength product and the yield strength can reach 1000MPa, Deep drawing product, Extra-deep drawing product.



连续热镀锌生产线

Continuous Hot Dipped Galvanizing Production Line

拥有四条连续热镀锌生产机组，设计产能100万吨，生产规格范围0.15~6.0*750~1500mm；产线配备全自动窄搭接电阻焊机+氩弧焊机、脱脂+电解清洗、连续退火炉、光整机、拉伸弯曲矫直机、混涂机、板面自动检测仪（CCT）、圆盘剪、静电涂油机；具备恒延伸率控制系统、镀层重量闭环控制系统、板面自动检测系统（CCT）、带钢磁性稳定系统；可生产家电用、深冲用、建筑用、结构用产品，产品分为无花镀锌产品、有花镀锌产品、高尔凡产品（5%铝合金镀层）、锌铁合金产品、锌铝镁产品、镀锌花纹板产品。

currently has 4 continuous hot dipped galvanizing sets. The production specifications are 0.15-6.0mm in thickness and 750-1500mm in width, with annual production capacity 1000,000 tons. The production line is equipped with automatic narrow overlap resistance welding machine + argon arc welding machine, degreasing + electrolytic cleaning, continuous annealing furnace, finishing machine, stretching and bending straightening machine, roller coating machine, plate surface automatic detector (CCT) disc shear, electrostatic oiler; it has constant elongation control system, coating weight closed-loop control system, plate surface automatic detection system (CCT), magnetic stability system of strip steel. The galvanizing units can produce home appliances, deep-drawing construction, structural products. The products are divided into zero spangle galvanized products, normal spangle galvanized products, Galfan products (5% aluminium alloy coating), zinc-iron alloy products, Zinc-Aluminium-Magnesium products, tear drop galvanized products.

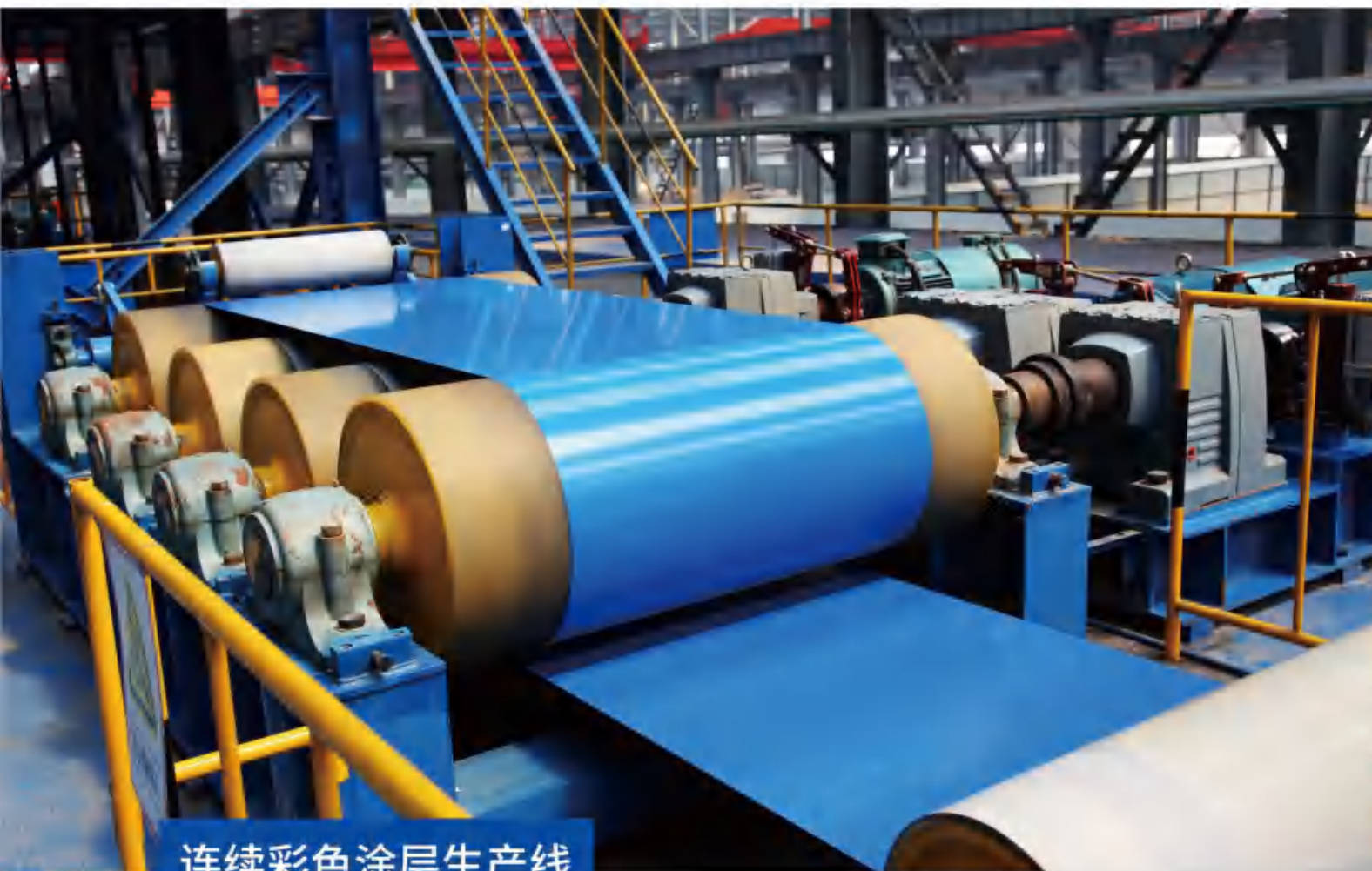


连续热镀铝锌生产线

Hot-Dip Galvalume Steel Sheet Production Line

拥有三条连续热镀铝锌生产机组，设计产能60万吨，生产规格范围0.15~2.0*750~1350mm；产线配备全自动窄搭接电阻焊机、脱脂+电解清洗、连续退火炉、光整机、拉伸弯曲矫直机、辊涂机、板面自动检测仪（CCT）、圆盘剪、静电涂油机；具备恒延伸率控制系统、镀层闭环控制系统、板面自动检测系统（CCT）；可生产家电用、深冲用、建筑用、结构用产。

has three hot-dip galvalume steel production lines, with a capacity of 600,000 tons and product specification range of 0.15mm~2.0mm*750mm~1350mm. The production line is equipped with automatic narrow lap resistance welding machine, degreasing & electrolytic cleaning, continuous annealing furnace, finishing machine, stretching and bending straightening machine, roller coating machine, automatic panel inspection instrument (CCT), disc shears, electrostatic oiling machine; Equipped with constant elongation control system, coating closed-loop control system, automatic board surface inspection system (CCT). Can supply product for home appliance, deep drawing, construction material, structure.



连续彩色涂层生产线

Color Coating Steel Sheet Production Line

拥有七条连续彩色涂层机组，设计产能130万吨；可生产规格范围0.15~2.0（铝镁锰3.0）*750~1650mm；产线配备全自动焊机+缝合机、脱脂+漂洗、化学预处理、印花机、涂机、固化炉、热覆膜机、拉伸弯曲矫直机、板面自动检测仪(CCT)、冷覆膜机；具备板面自动检测系统（CCT）、涂料恒温系统、板温恒定系统；可生产印花产品、热覆膜产品、绒面网纹产品、功能性涂层产品，应用于家电、建筑、结构、装饰等领域。

has seven color coating steel lines, with a capacity of 1,300,000 tons and production specification range of 0.15mm-2.0mm*750mm-1650mm (aluminum sheet thickness up to 3.0mm). The production line is equipped with automatic welding machine, sewing machine, degreasing & rinsing, chemical pretreatment, printing machine, coating machine, curing furnace, hot laminating machine, stretching and bending straightening machine, automatic board surface detector (CCT), cold laminating machine. Equipped with automatic board surface detection system (CCT), paint constant temperature system, plate temperature constant system. We can produce printing products, VCM product, texture product, matte product, special functional coating products, could be applied in home appliance, construction, structure, decoration and other fields.



剪切配送生产线

Cut Distribution Production Line

拥有五条纵剪、两条横剪、两条压花共九条生产机组，可剪切开平范围0.15~6.0*30~1650*300~12000mm；产线配备皮带张紧机、冷覆膜机，可实现在线覆膜，获得良好的板面质量；可加工高强度产品、深冲产品、彩涂产品、镀锌产品等，产品覆盖家电、汽车、建筑等多个领域。

has five vertical cut, two transverse cut and two embossed production units with a total of nine units. The range of cutting can be 0.15~6.0*30~1650*300~12000mm. The production line is equipped with belt tensioning machine and cold laminating machine, which can realize online laminating and obtain good board quality. Can process high strength products, deep processing products, color coating products, galvanized products, products covering home appliances, automobiles, construction and other fields.

GLOBAL NETWORK

全球网络

